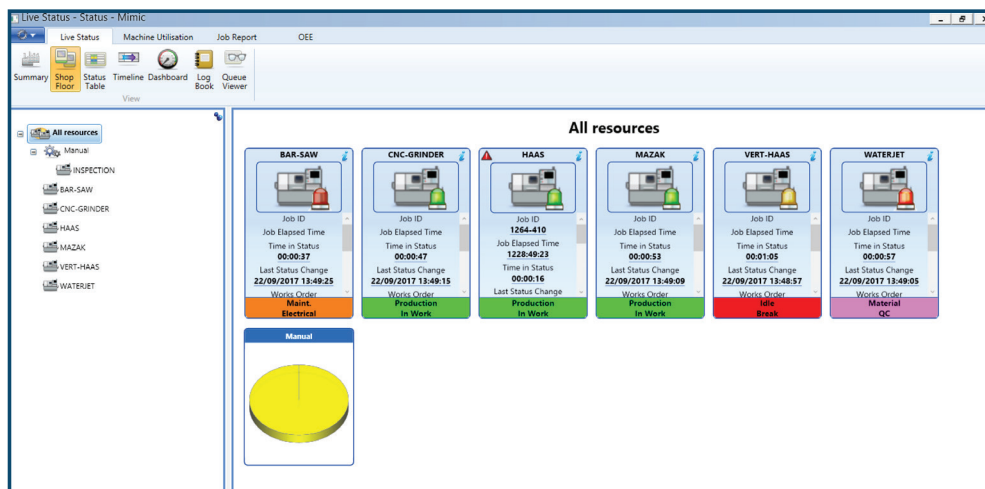


Benefits for: **Owner/CEO**

Making you more efficient

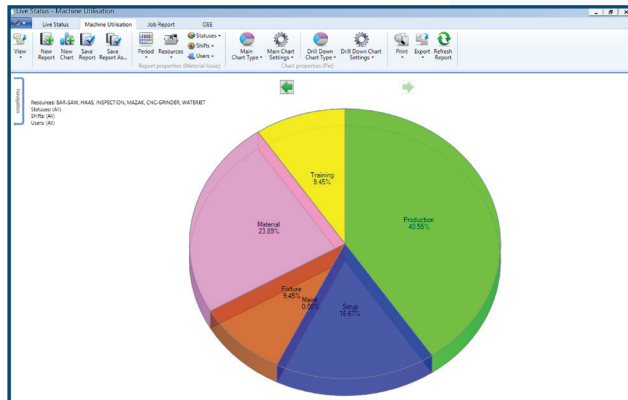
You are sitting on a mountain of data. Production scheduling and analytical information that can be used to accelerate your manufacturing processes and unleash the full potential of your shop. JobPack's easily adaptable software can move your business forward, unlocking efficiencies, and releasing your full capacity. First year JobPack users have increased their on-time delivery rates by 10%, 15% and higher. Be smarter. Be faster.



Keeping a close watch in real time on the machines in your shop is made simple with JobPack's scheduling and machine monitoring software.

Start with the right data

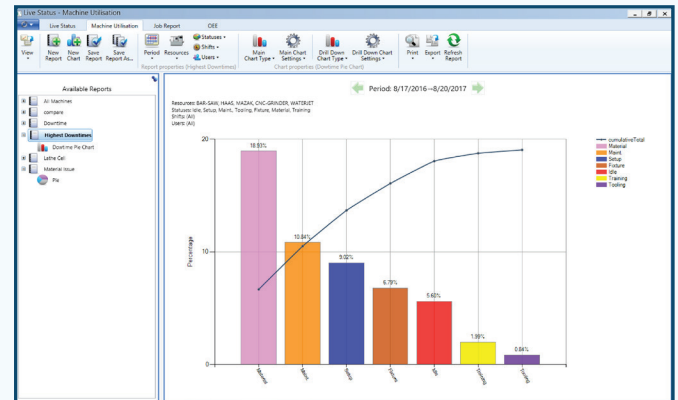
To make effective decisions about manufacturing execution, you need information. You need the right data, at the right time, but the traditional ledgers and spreadsheets you have come to rely on can only take you so far. You might not even have exposure to the data that is most important: Are jobs taking longer than they should? If so, why? Are we missing orders? Where might we be losing money? Jobpack's real-time scheduling and analytics software gives you the information you need to perform smarter and faster.



Analyzing downtime reasons for more than just the “hows” but looking into the “whys” can move your business forward.

Increase visibility

One way that JobPack’s scheduling and machine-monitoring software can help you implement manufacturing execution plans is by increasing traceability of jobs in your shop. When you increase the visibility of each step in the process, and collect data along the way, you can prevent potential clashing that could result from scheduling adjustments. You can correct the reasons for machine downtime, instead of just knowing that a machine is down. You can adjust your processes and procedures when you see that a step is taking too long. The information is there, in your shop. It’s always been there, now it’s time to put it to work for you.



Knowing that a machine is being utilized is important, but knowing how efficiently it is being utilized is imperative. JobPack’s Downtime Pareto Chart shows you all the KPI’s you need, empowering you to make adjustments for the highest throughput.

“Not knowing” puts you at risk

Time is money on the shop floor. The last thing you want to be doing is guessing or using imprecise spreadsheets to track productivity. With JobPack’s visually intuitive interface and deep-dive reporting, you can make informed adjustments to your processes, procedures, and staffing choices. Know why a machine is not running. Know why a job was late. And then execute plans based on real data, real metrics. You can reduce the risk of missing important delivery dates by improving efficiencies globally around your shop.

Day-to-day, year-over-year

JobPack gives you real-time exposure to job, machine, and staffing status. You can run end-of-day reports to track progress. You can review end-of-month reports to see what effects your improvements have had. And you can examine year-end reports to make overarching adjustments to your shop floor. JobPack collects, analyzes, and reports on the smallest bits of data to help you see the biggest picture.

For more information, go to www.jobpack.com.
To schedule a demonstration, call 847-741-1861
or send us an email at: sales@jobpack.com.